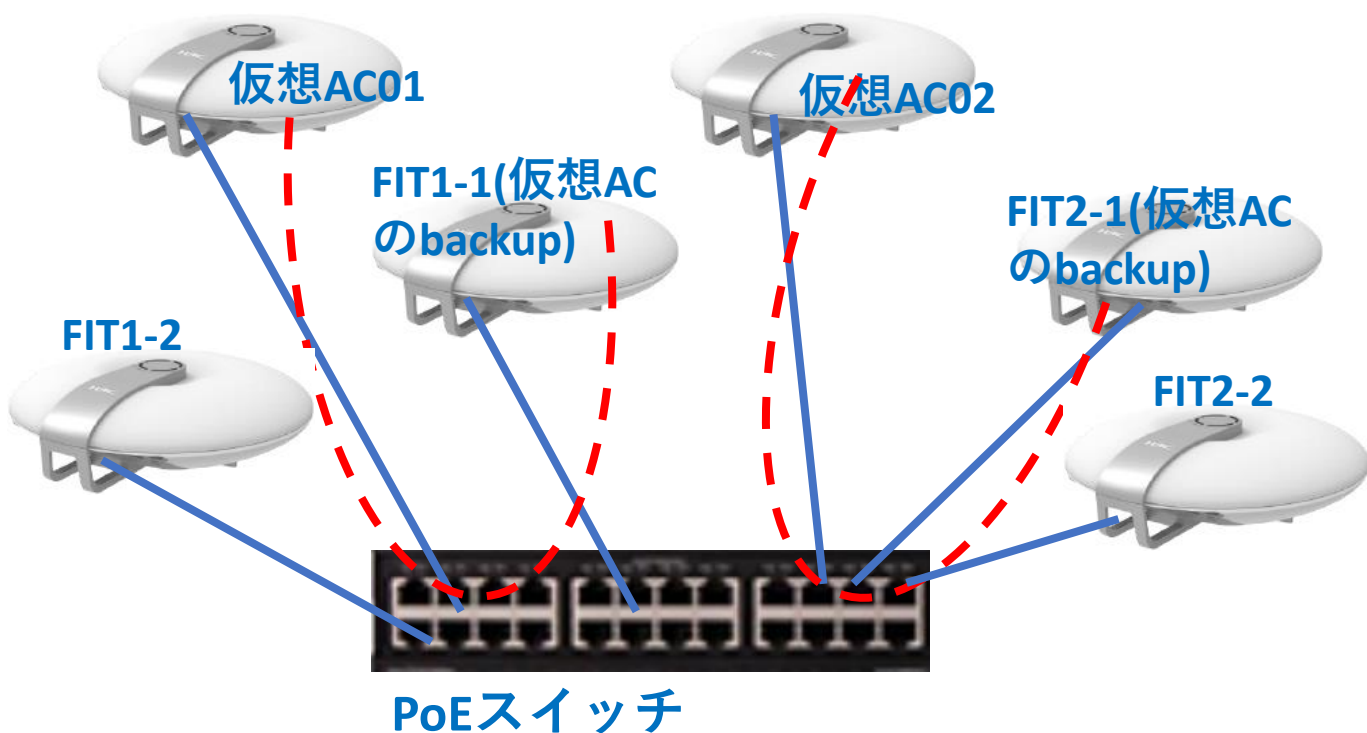


同一セグメントに複数台のAnchor-acの設定例



- 全て固定IPで管理する
- 最初にAPを登録する時だけAnchor-acを
wlan auto-ap enable
wlan auto-persistent enable
にしてFIT APを登録して、登録し終わったら
これらの設定をundoする

Anchor-ac:192.168.0.50
FIT : 192.168.0.51



FIT : 192.168.0.52
Anchor-ac:192.168.0.50



wlan capwap discovery-policy unicast
*unicastのCAPWAPリクエストのみを受信する

wlan ac ip 192.168.0.50
CAPWAPリクエストをunicastで発信

wlan anchor-ap persistent-mode ac
*他のAnchor-acが存在してもACを維持する

CAPWAP



Anchor-ac:192.168.0.60
FIT : 192.168.0.61



FIT : 192.168.0.62
Anchor-ac:192.168.0.60



wlan capwap discovery-policy unicast
*unicastのCAPWAPリクエストのみを受信する

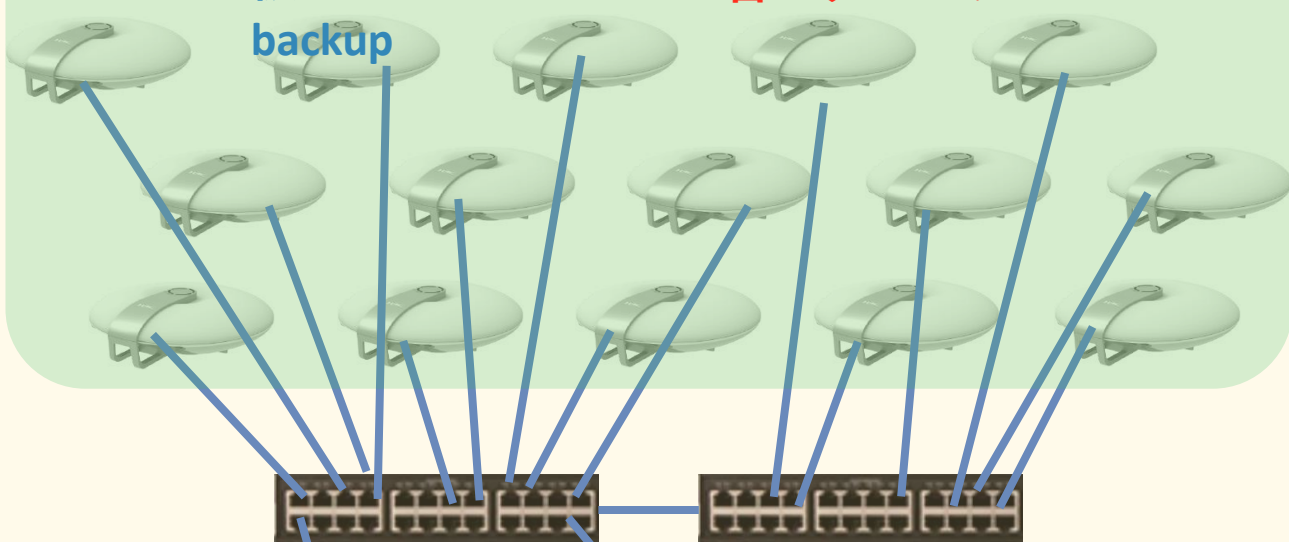
wlan ac ip 192.168.0.60
CAPWAPリクエストをunicastで発信

wlan anchor-ap persistent-mode ac
*他のAnchor-acが存在してもACを維持する

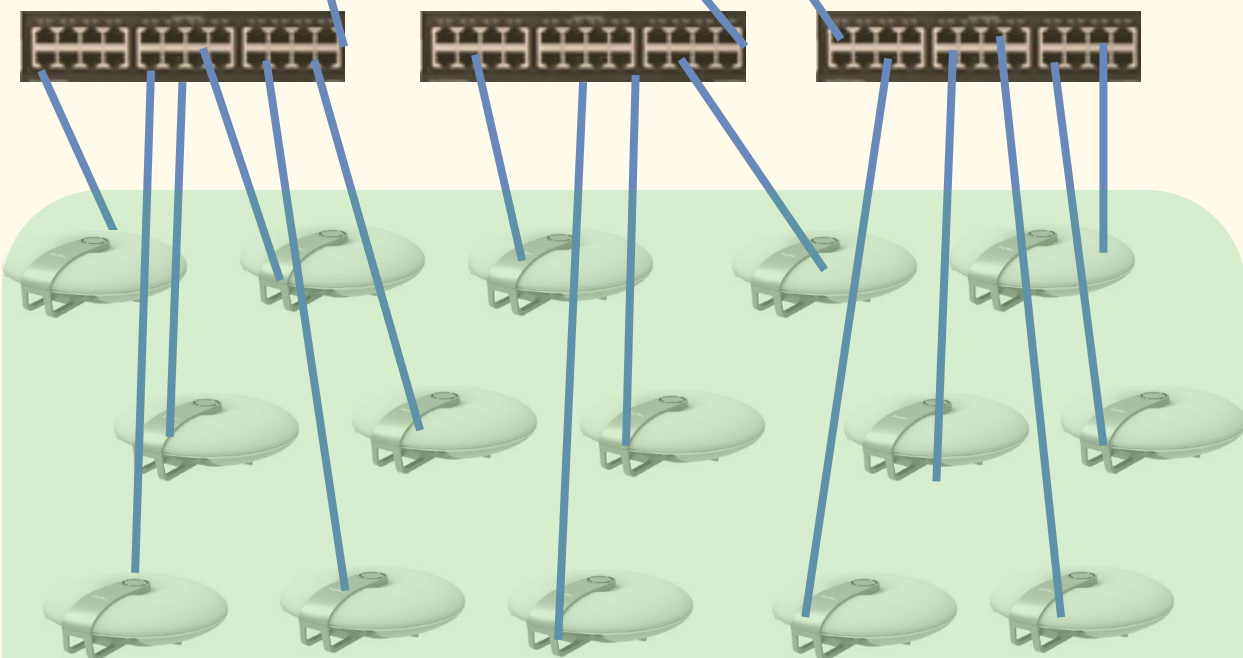
仮想AC01

仮想AC01
backup

WA6638 50台のグループ



同一セグメント



仮想AC02

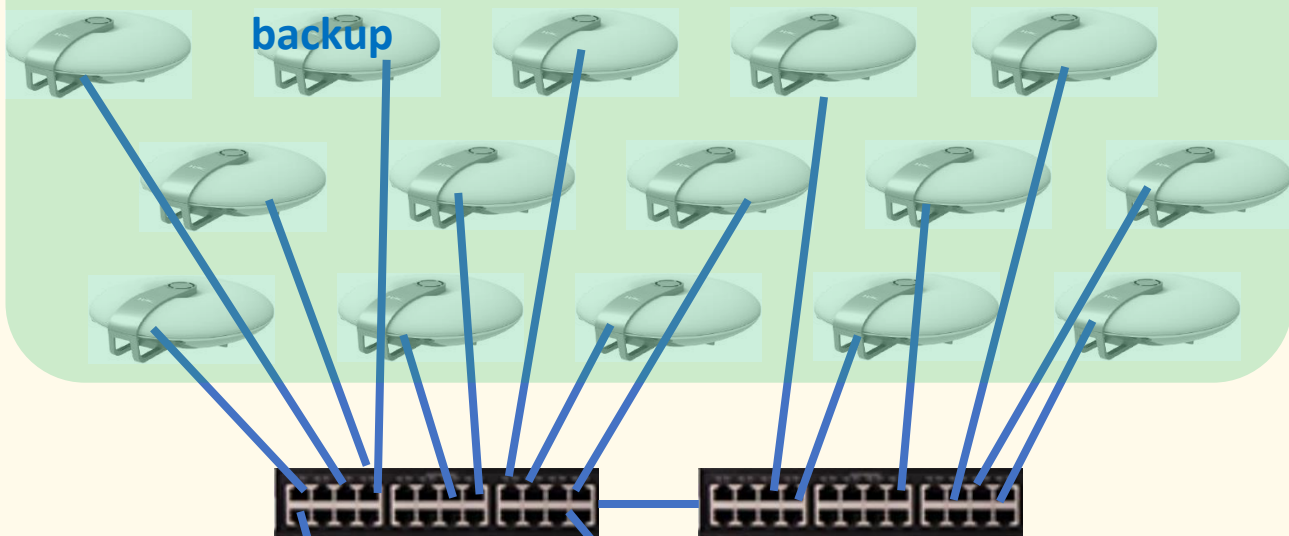
仮想A02
backup

WA6638 50台のグループ

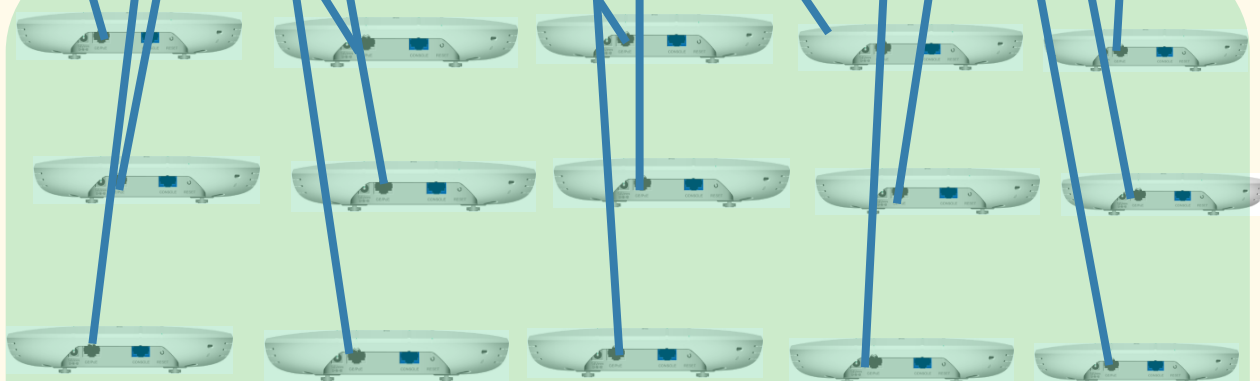
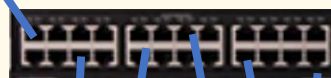
仮想AC01

仮想AC01
backup

WA6638 50台のグループ



同一セグメント



仮想AC02

仮想A02
backup

WA6320 30台のグループ

Anchor-acの設定

```
#
version 7.1.064, Release 2459
#
sysname OFFICE
#
clock timezone JP add 09:00:00
clock protocol ntp
#
wlan global-configuration
#
telnet server enable
#
port-security enable
#
lldp global enable
lldp hold-multiplier 8
#
password-recovery enable
#
vlan 1
#
wlan service-template 1
ssid H3C_Wifi_1
fail-permit enable keep-online
akm mode psk
preshared-key pass-phrase cipher $c$3$AJ48rrcwArZS5K5W4IcPV4QJt3R7VKcBRMItGMQ=
cipher-suite ccmp
cipher-suite tkip
security-ie rsn
security-ie wpa
service-template enable
#
wlan service-template 2
ssid H3C_Wifi_2
fail-permit enable keep-online
akm mode psk
preshared-key pass-phrase cipher $c$3$7O9AtM6gj/IGRsNfReKpeumB0ZwX1106ql5V5uU=
cipher-suite ccmp
cipher-suite tkip
security-ie rsn
security-ie wpa
service-template enable
#
wlan service-template 3
ssid H3C_Wifi_3
fail-permit enable keep-online
akm mode psk
preshared-key pass-phrase cipher $c$3$WsPL026gZZbTVhpuF9py6vritHspumg47exBfT8=
cipher-suite ccmp
cipher-suite tkip
security-ie rsn
security-ie wpa
service-template enable
```

```

#
wlan service-template 4
ssid H3C_Wifi_4
fail-permit enable keep-online
akm mode psk
preshared-key pass-phrase cipher $c$3$tBL0vgluCLGrSfKYWdlZ0M9Dy8EfTlnC5sm8KiPg=
cipher-suite ccmp
cipher-suite tkip
security-ie rsn
security-ie wpa
service-template enable
#
wlan service-template 5
ssid H3C_Wifi_5
fail-permit enable keep-online
akm mode psk
preshared-key pass-phrase cipher $c$3$EZKnZU1oJCQdKFqEojl09QlBIEbGSHuJBuDh/Pw=
cipher-suite ccmp
cipher-suite tkip
security-ie rsn
security-ie wpa
service-template enable
#
interface NULL0
#
interface Vlan-interface1
ip address 192.168.0.50 255.255.255.0
#
interface GigabitEthernet1/0/1
#
interface WLAN-Radio1/0/1
#
interface WLAN-Radio1/0/2
#
scheduler logfile size 16
#
line class console
user-role network-admin
#
line class vty
user-role network-operator
#
line con 0
user-role network-admin
#
line vty 0 31
authentication-mode scheme
user-role network-operator
#
line vty 32 63
user-role network-operator
#
ip route-static 0.0.0.0 0 192.168.0.1

```

```
ntp-service enable
ntp-service unicast-server ntp.nict.jp
#
domain system
#
domain default enable system
#
role name level-0
description Predefined level-0 role
#
role name level-1
description Predefined level-1 role
#
role name level-2
description Predefined level-2 role
#
role name level-3
description Predefined level-3 role
#
role name level-4
description Predefined level-4 role
#
role name level-5
description Predefined level-5 role
#
role name level-6
description Predefined level-6 role
#
role name level-7
description Predefined level-7 role
#
role name level-8
description Predefined level-8 role
#
role name level-9
description Predefined level-9 role
#
role name level-10
description Predefined level-10 role
#
role name level-11
description Predefined level-11 role
#
role name level-12
description Predefined level-12 role
#
role name level-13
description Predefined level-13 role
#
role name level-14
description Predefined level-14 role
#
user-group system
```

```
local-user admin class manage
password hash
$h$6$LqJADNRuD6YztKKH$aV2H00hcSnngJ1ZWaB1h9qSQ2nbwjbFTfoZ5LldJpFL88I3/zZMW/Lw4K1Zj/pcBw
toFSLM7OiviHKcAgtBeuQ==
service-type telnet http https
authorization-attribute user-role network-admin
#
ip http enable
ip https enable
#
undo attack-defense tcp fragment enable
#
```

wlan capwap discovery-policy unicast wlan anchor-ap persistent-mode ac

```
#
wlan ap-group default-group
vlan 1
ap-model WA6320-JP
radio 1
radio enable
service-template 1
service-template 2
service-template 3
service-template 4
service-template 5
radio 2
radio enable
service-template 1
service-template 2
service-template 3
service-template 4
service-template 5
gigabitethernet 1
#
wlan ap LOBBY model WA6320-JP
serial-id 219801A2YF8217E00048
mac-address 9c54-c24d-e8a0
```

anchor-ap enable

```
radio 1
radio 2
gigabitethernet 1
```

```
#
wlan ap OFFICE model WA6320-JP
serial-id 219801A2YF8216E0001L
```

anchor-ap enable

```
vlan 1
radio 1
radio 2
gigabitethernet 1
```

```
#
return
```


FIT APの設定

```
#
version 7.1.064, Release 2459
#
sysname OFFICE
#
telnet server enable
#
lldp global enable
lldp hold-multiplier 8
#
password-recovery enable
#
vlan 1
#
nqa template icmp apmgr-aptoac-icmp
data-size 1500
frequency 1000
probe timeout 1000
reaction trigger per-probe
#
interface NULL0
#
interface Vlan-interface1
ip address 192.168.0.52 255.255.255.0
#
interface GigabitEthernet1/0/1
#
interface WLAN-Radio1/0/1
#
interface WLAN-Radio1/0/2
#
scheduler logfile size 16
#
line class console
user-role network-admin
#
line class vty
user-role network-operator
#
line con 0
user-role network-admin
#
line vty 0 4
user-role network-admin
set authentication password hash
$h$6$5Y3LHUkt7jW1/qLb$IfRyF+ZO+2nAK4AG+j/Y6nnfbq9xIBa0m3QVxHTPpadPldgoACv2yj5H5WvdFwaBy
FLaKUCxIizYIONSQisKrQ==
#
line vty 5 63
user-role network-operator
#
undo gratuitous-arp-learning enable
```

```
domain system
#
domain default enable system
#
role name level-0
description Predefined level-0 role
#
role name level-1
description Predefined level-1 role
#
role name level-2
description Predefined level-2 role
#
role name level-3
description Predefined level-3 role
#
role name level-4
description Predefined level-4 role
#
role name level-5
description Predefined level-5 role
#
role name level-6
description Predefined level-6 role
#
role name level-7
description Predefined level-7 role
#
role name level-8
description Predefined level-8 role
#
role name level-9
description Predefined level-9 role
#
role name level-10
description Predefined level-10 role
#
role name level-11
description Predefined level-11 role
#
role name level-12
description Predefined level-12 role
#
role name level-13
description Predefined level-13 role
#
role name level-14
description Predefined level-14 role
#
domain system
#
domain default enable system
#
```

```
role name level-0
description Predefined level-0 role
#
role name level-1
description Predefined level-1 role
#
role name level-2
description Predefined level-2 role
#
role name level-3
description Predefined level-3 role
#
role name level-4
description Predefined level-4 role
#
role name level-5
description Predefined level-5 role
#
role name level-6
description Predefined level-6 role
#
role name level-7
description Predefined level-7 role
#
role name level-8
description Predefined level-8 role
#
role name level-9
description Predefined level-9 role
#
role name level-10
description Predefined level-10 role
#
role name level-11
description Predefined level-11 role
#
role name level-12
description Predefined level-12 role
#
role name level-13
description Predefined level-13 role
#
role name level-14
description Predefined level-14 role
#
user-group system
#
wlan ac ip 192.168.0.50
#
return
```

H3C

The Leader in Digital Solutions